

## Software for VMware ESXi via NMC (paid version)

1	Over viewer .....	2
1.1	Topological structure.....	2
1.2	Shutdown Sequence.....	3
2	Configuring for Software .....	4
2.1	Software installation .....	4
2.1.1	Software installation on Windows OS.....	4
2.1.2	Software installation on Linux OS.....	4
2.2	Software start.....	4
2.2.1	Software start on windows OS .....	4
2.2.2	Software start on Linux OS .....	5
2.3	Software communication .....	5
2.4	Set the shutdown condition .....	6

# 1 Over viewer

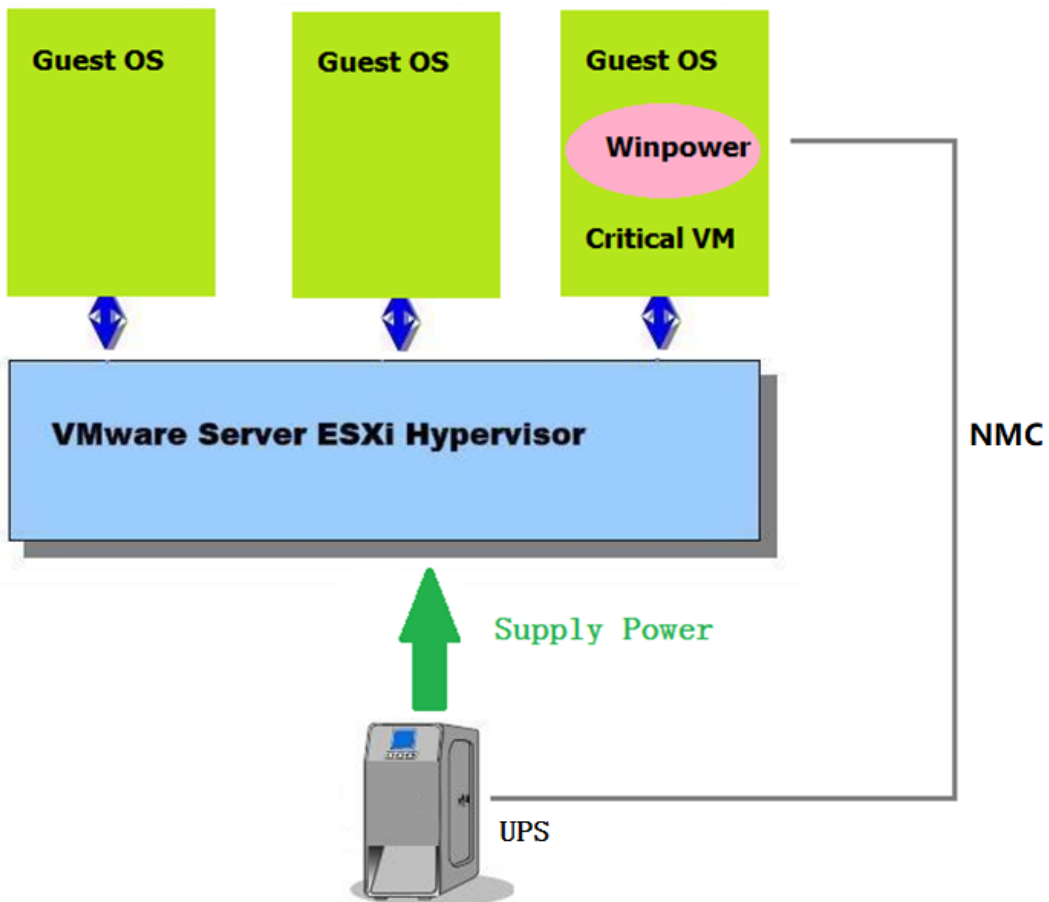
## 1.1 Topological structure

### ● Case 1:

Software can be installed on any of the Guest OS, just as windows, Linux, Mac OSX, Solaris.

Please make sure the “**VMware tools**” are installed for all the Guest OS.

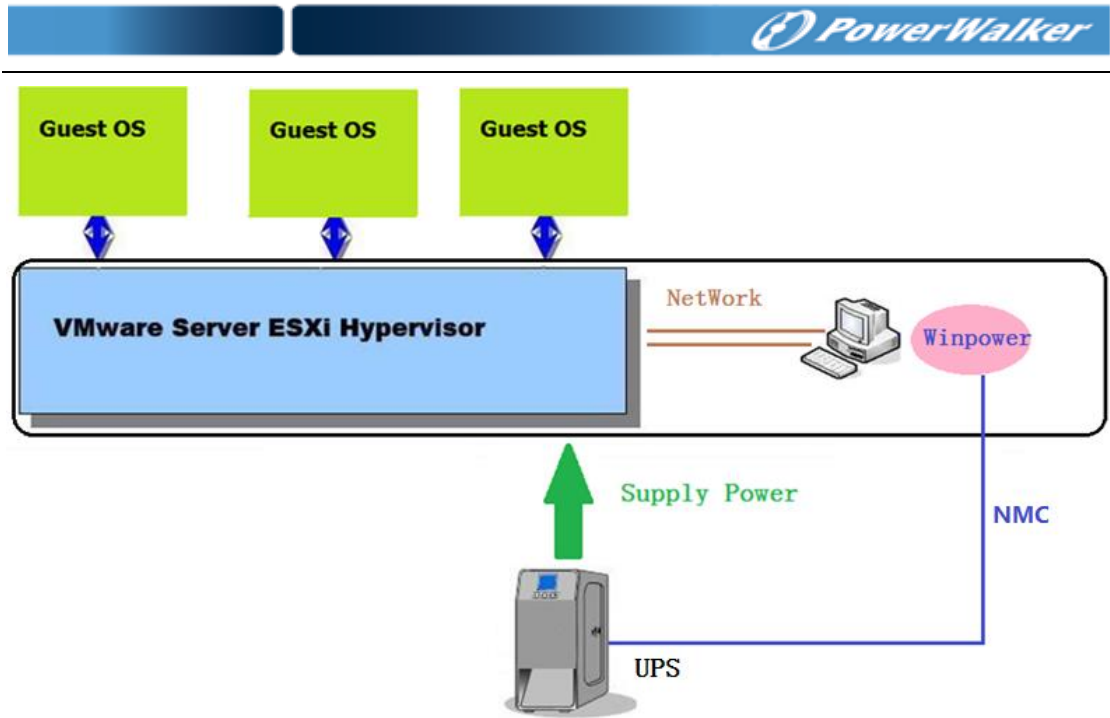
The guest OS that is installed Software is the Critical VM.



### ● Case 2:

Software can be installed on the other physical Computer at the same network with VMware ESXi, just like Windows, Linux, Mac OSX, Solaris.

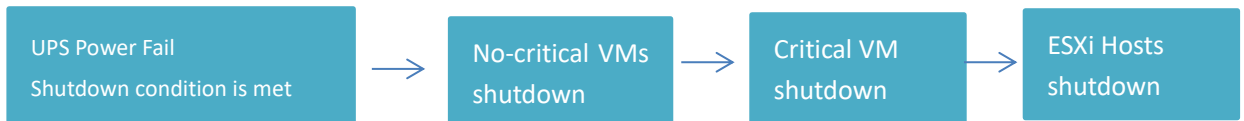
Please make sure the “**VMware tools**” are installed for the all the Guest OS.



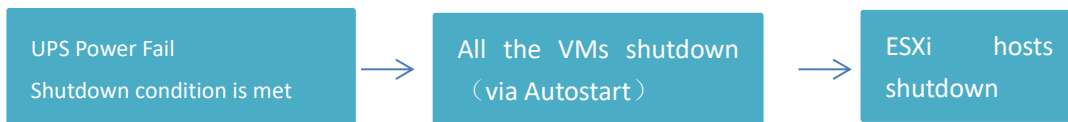
## 1.2 Shutdown Sequence

### Case 1 (Case 1 has two Instances) :

- Software shut down the VMs and Hosts(Host disable Autostart)



- Software only shut down the Hosts(Host enable Autostart)



### Case 2:



#### Note:

In the Case 2, Local physical PC shut down should be via USB/RS232 or via SPS, check Software and SPS User manual for more information.

## 2 Configuring for Software

### 2.1 Software installation

Software can be installed on any of the OS, just like Windows, Linux, MACOSX, Solaris  
For more simply, We just give the windows and Linux(AMD64) samples.  
Please check the Software user manual for more information.

#### 2.1.1 Software installation on Windows OS

- Right click the “setup.exe”, choose “Run as administrator” to complete the installation.
- The Software agent will be running automatically when the Windows boots

#### 2.1.2 Software installation on Linux OS

- Download the software (Software\_setup\_LinuxAMD64.tar.gz) from the Website or from the CD attached. Upload the software from Windows to the Linux using WinSCP tools.
- Extract the software, there are two files including LinuxAMD64 and InstallerData.
- Enter the LinuxAMD64 and then enter the following command to install the software:  
**cd LinuxAMD64**  
**./setup.bin (if the Linux is GUI Mode)**  
**./setup\_console.bin (if the Linux is CUI mode)**
- Go to the installation path and enter the following command to start the Software agent manually:  
**cd /opt/MonitorSoftware**  
**./agent start**

Note: The Software agent will be running automatically when the Linux boots.

## 2.2 Software start

### 2.2.1 Software start on windows OS

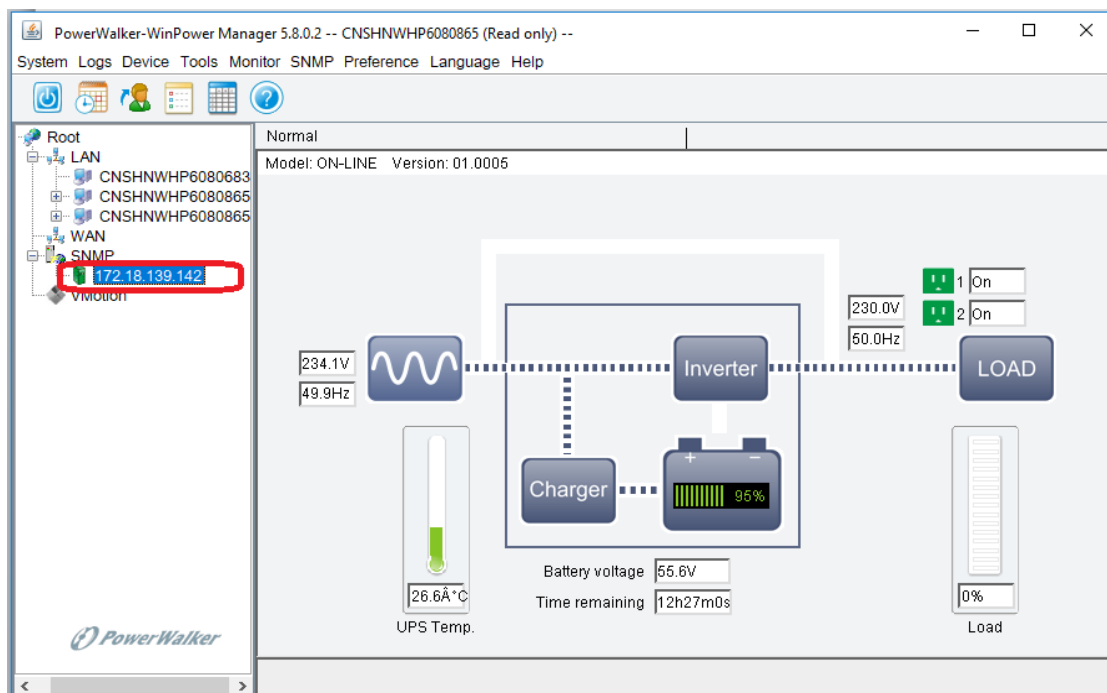
- Software agent will be started automatically, you can right click the green icon choose “start monitor” to start the Software manager.

## 2.2.2 Software start on Linux OS

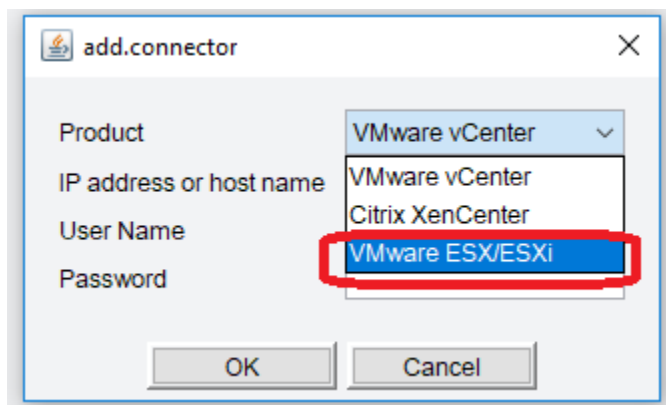
- Software agent will be start automatically, you can input the command “./monitor” under the “/opt/MonitorSoftware” to start the Software manager

## 2.3 Software communication

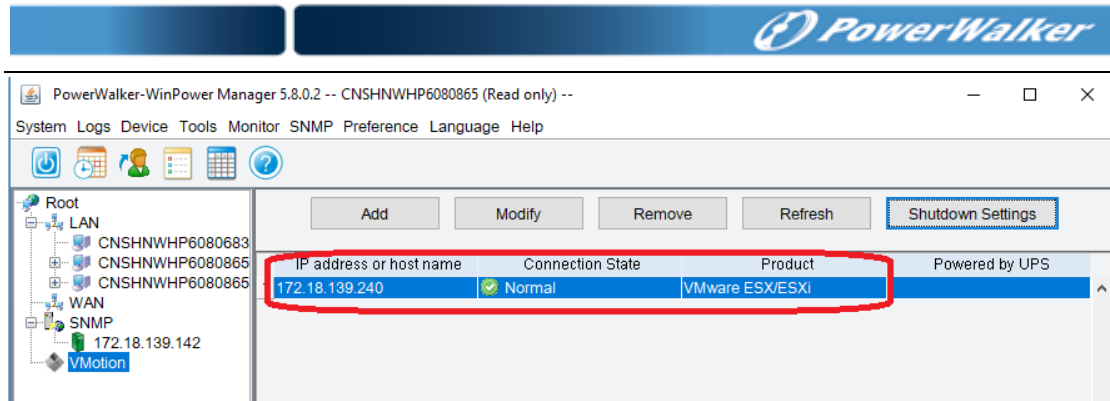
- Click “SNMP”->“Search Device”, Input the start IP and end IP, search the SNMP devices. The devices will be added to “SNMP” tree.



- Click “VMotion”->“Add”, Choose “VMware ESX/ESXi” on the “Product” down-up list.

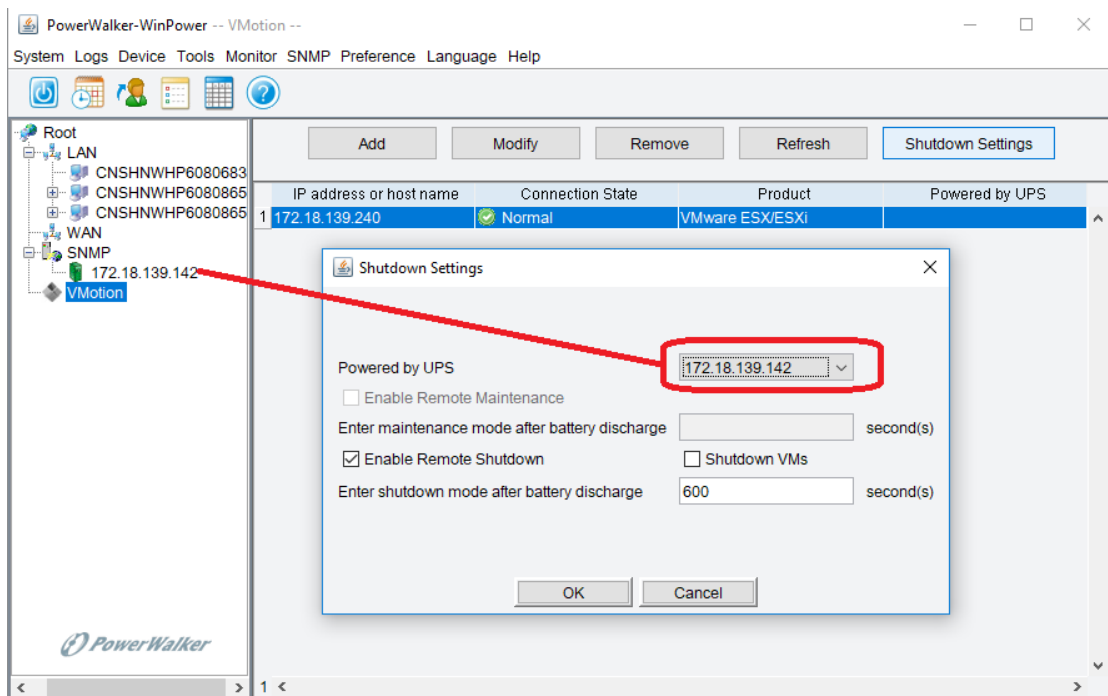


- Input the ESX/ESXi IP address, user name and password, the ESX/ESXi will be add to the table

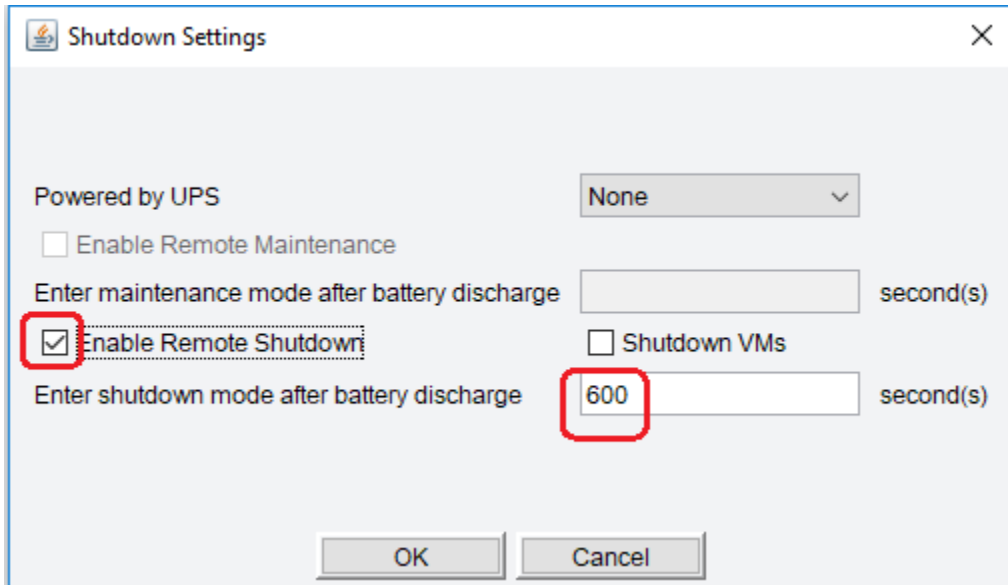


## 2.4 Set the shutdown condition

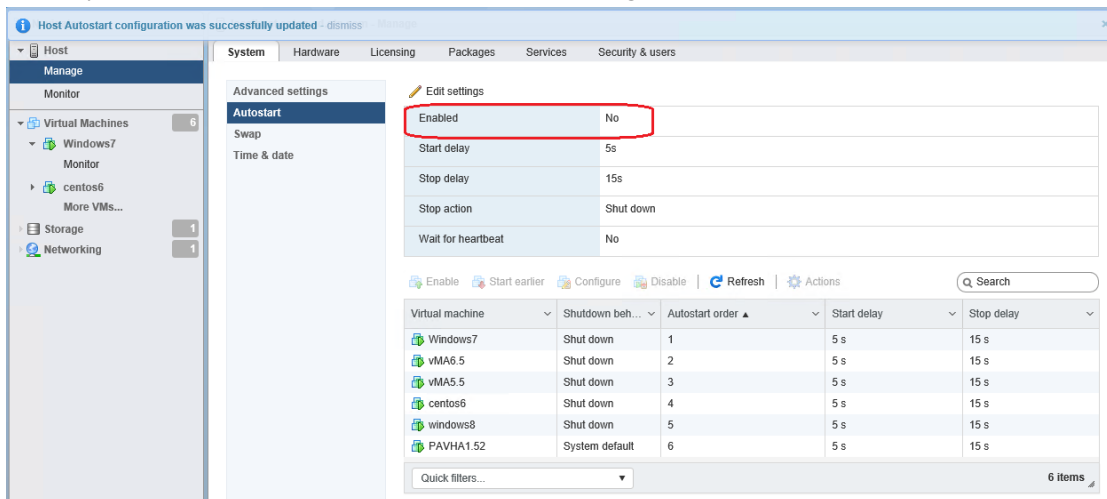
- Choose ESX/ESXi, Click “Shutdown Settings”, set the shutdown parameters for the corresponding ESX/ESXi
- Set the UPS supplied source to ESX/ESXi at the “Powered by UPS” up-down list.



- Choose the checkbox “Enable Remote Shutdown”, set the UPS discharge timer for ESX/ESXi shutdown  
For the below image: The ESX/ESXi will start to shut down after UPS AC fail for 600s.

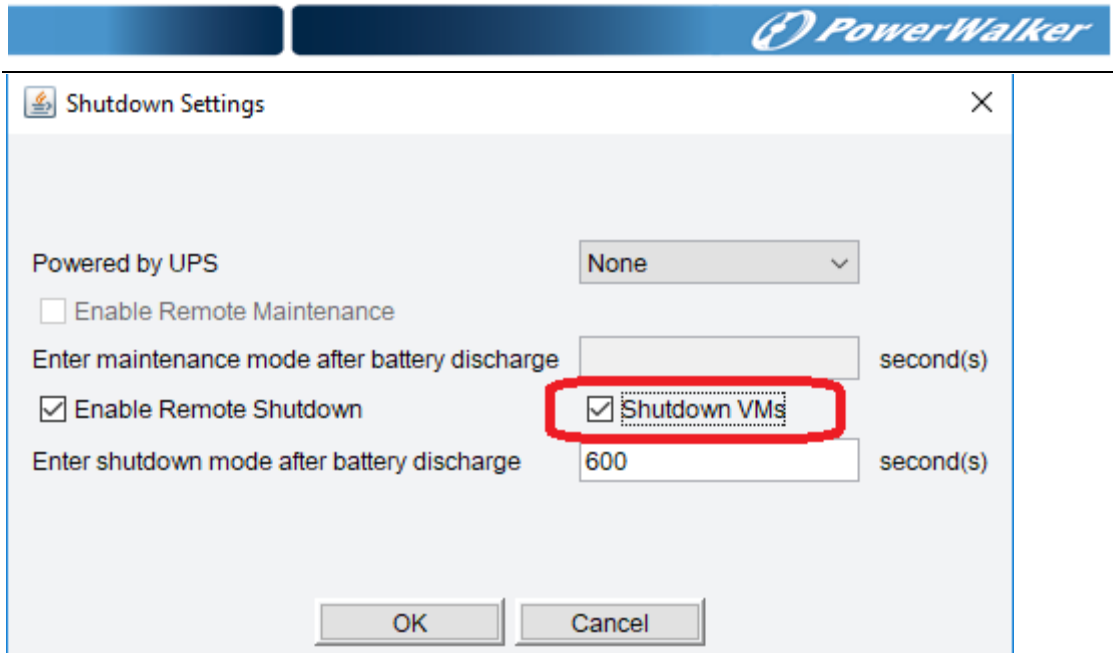


- If you have disabled the “Autostart” as below image:

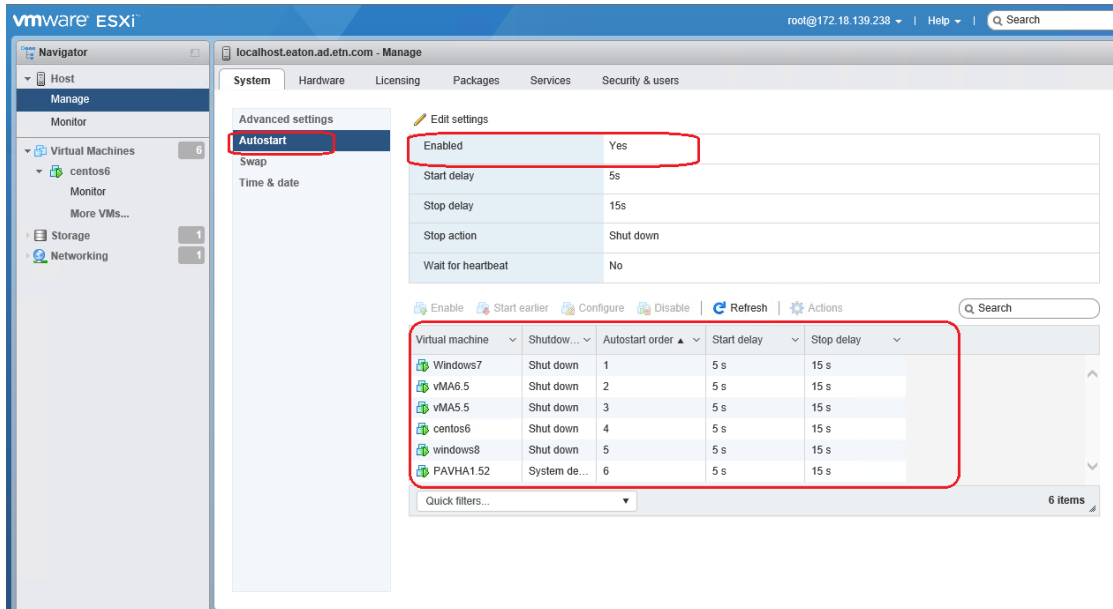


Please choose “Shutdown VMs” checkbox, so Software will shut down the VMs firstly then shut down the host.

Note: When the Software is installed on the guest OS, the guest OS hosting Software will be judged to critical guest OS, so the critical VM will be shut down at the last.



- If you have enable the “Autostart” as below image:



Please don't choose "Shutdown VMs" checkbox, so Software only shut down the host. The guest OS will be shutdown via "autostart" function.



Shutdown Settings

Powered by UPS

Enable Remote Maintenance

Enter maintenance mode after battery discharge  second(s)

Enable Remote Shutdown  Shutdown VMs

Enter shutdown mode after battery discharge  second(s)

OK Cancel